

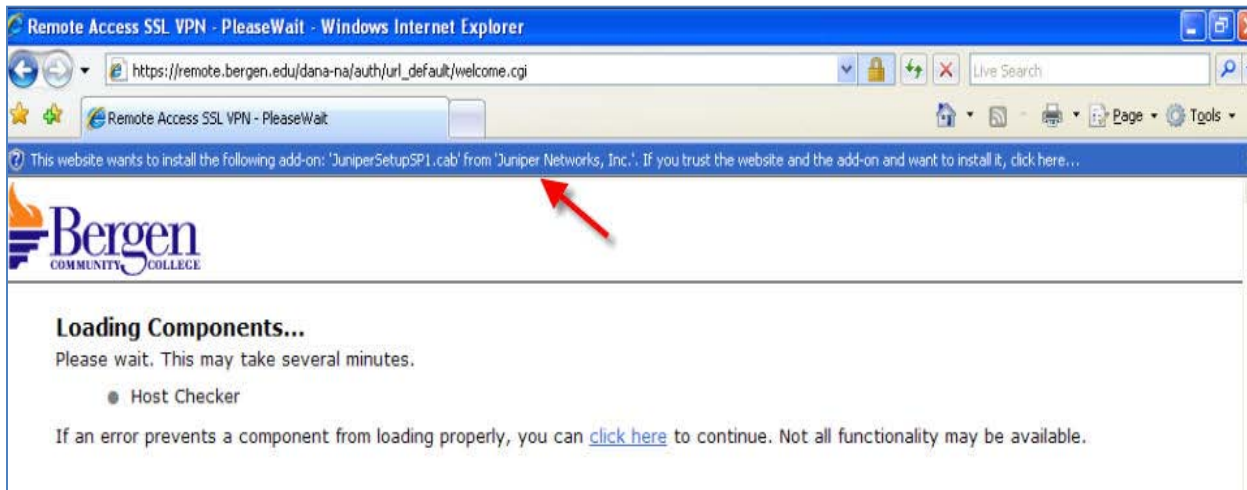


Logging in to the College's SSL VPN

Using the SSL VPN, you can access your "My Documents" folder or SharePoint sites that you normally access from your computer on campus.

Navigate to <https://remote.bergen.edu>

The first time you attempt to log on to this site on any computer, there will be a prompt to install an Active X control that is necessary to connect. See blue bar below.



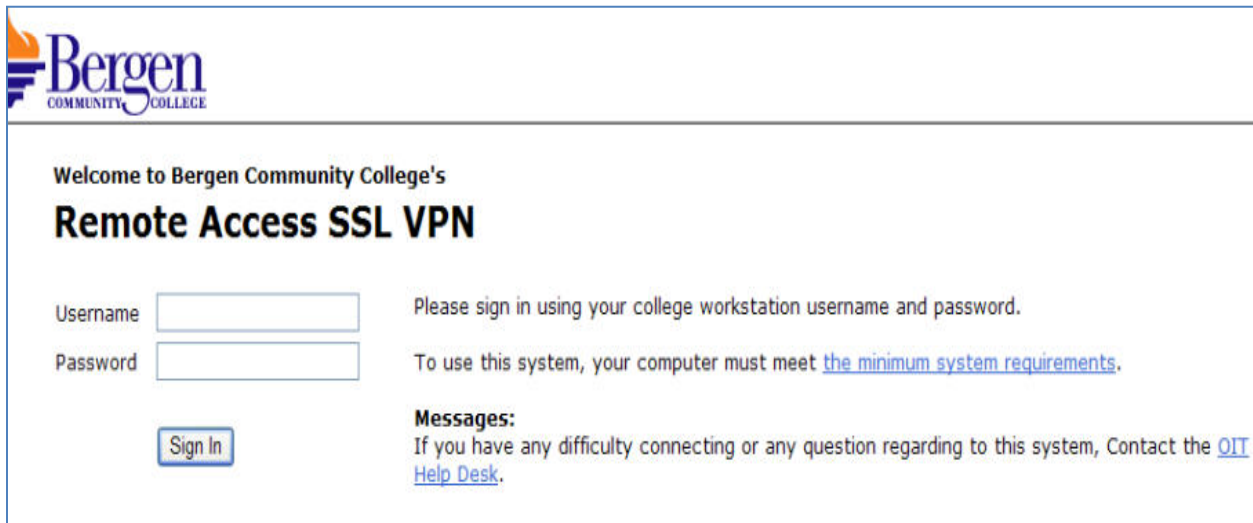
Click on the blue bar and choose "Install ActiveX Control":



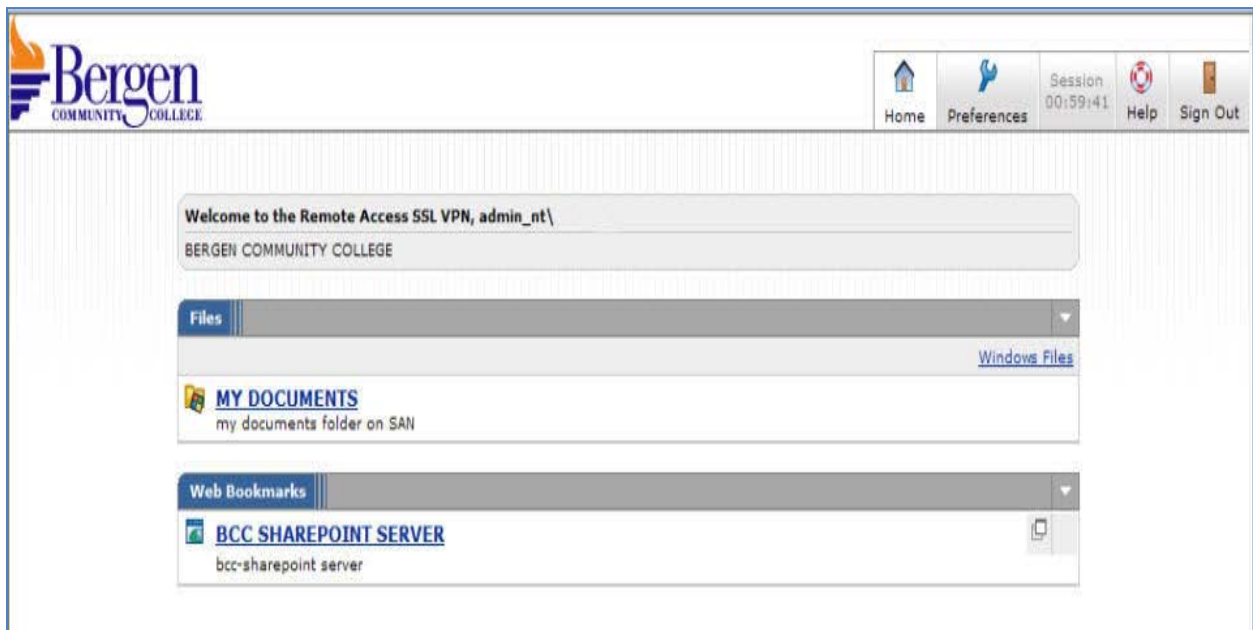
Click "Install"



After a brief install and security check, you will see this screen:

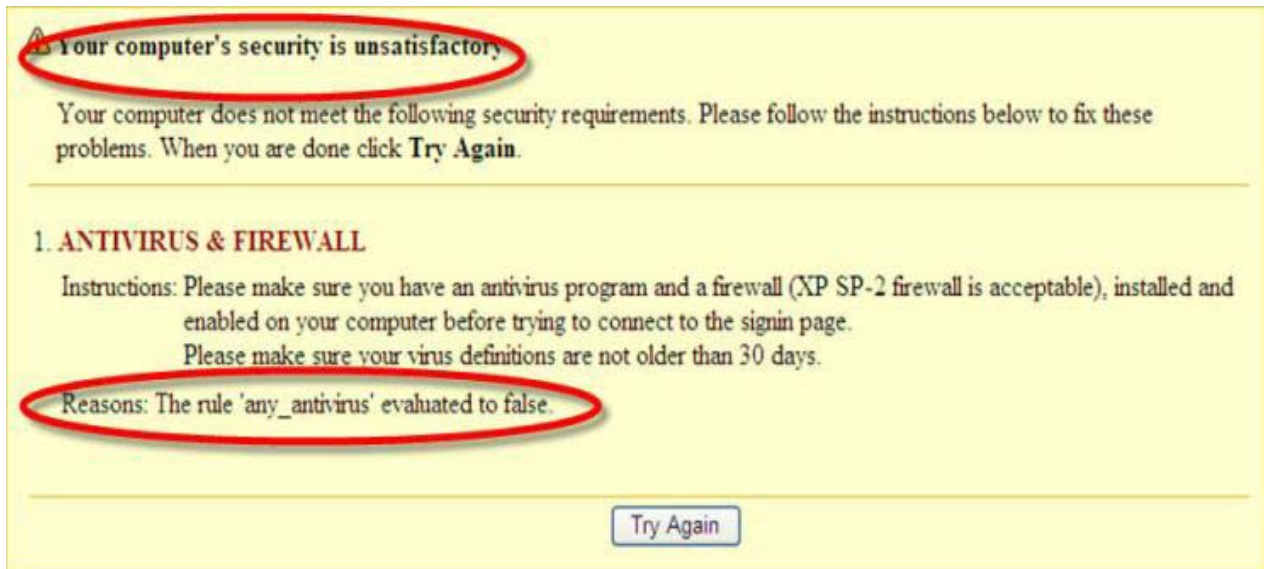


Sign on with your Bergen network ID and password, and you will be taken to this screen giving you a choice of destinations:



Possible Error Messages

Antivirus check failed (this happens when a supported anti-virus program is not found by the installer on your computer):



Your computer's security is unsatisfactory

Your computer does not meet the following security requirements. Please follow the instructions below to fix these problems. When you are done click **Try Again**.

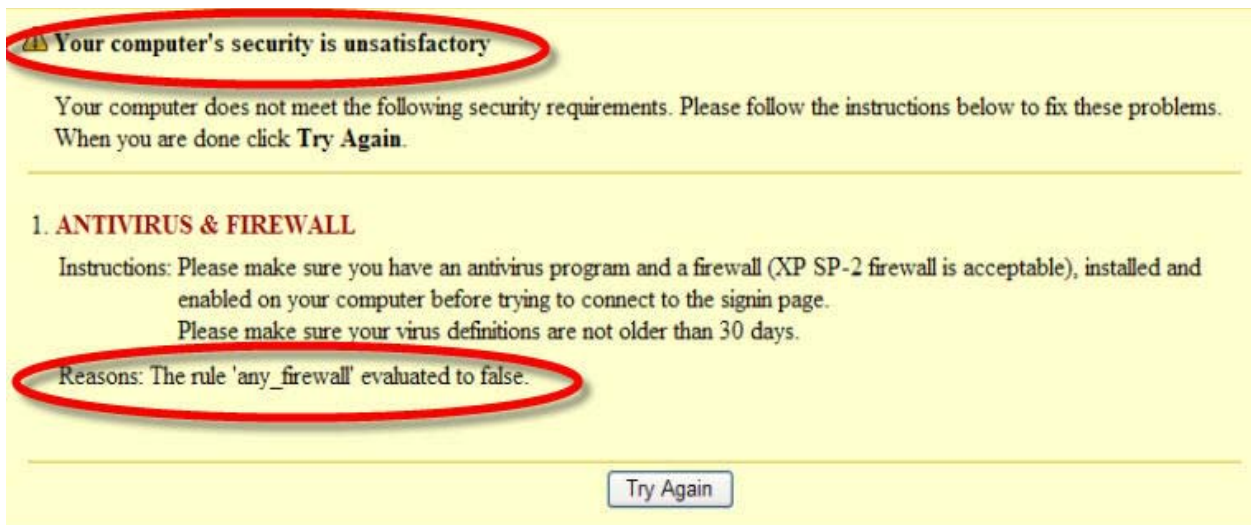
1. ANTIVIRUS & FIREWALL

Instructions: Please make sure you have an antivirus program and a firewall (XP SP-2 firewall is acceptable), installed and enabled on your computer before trying to connect to the signin page.
Please make sure your virus definitions are not older than 30 days.

Reasons: The rule 'any_antivirus' evaluated to false.

[Try Again](#)

Firewall check failed (this happens when a supported firewall program (including Windows Firewall) is not found by the installer on your computer):



Your computer's security is unsatisfactory

Your computer does not meet the following security requirements. Please follow the instructions below to fix these problems. When you are done click **Try Again**.

1. ANTIVIRUS & FIREWALL

Instructions: Please make sure you have an antivirus program and a firewall (XP SP-2 firewall is acceptable), installed and enabled on your computer before trying to connect to the signin page.
Please make sure your virus definitions are not older than 30 days.

Reasons: The rule 'any_firewall' evaluated to false.

[Try Again](#)

Invalid Credentials (the user name or password you entered is not verified by the network):



Welcome to Bergen Community College's

Remote Access SSL VPN

Invalid username or password. Please re-enter your user information.

Username

Please sign in using your college workstation username and password.

Password

To use this system, your computer must meet [the minimum system requirements](#).

Messages:

If you have any difficulty connecting or any question regarding to this system, Contact the [OIT Help Desk](#).

If you have any difficulty connecting to the SSL VPN or have any questions regarding the SSL VPN system, please contact the [OIT Help Desk](#).